

Geography
Spring 2 Lesson 1
24.2.2021



Let's explore a frrrreezing
place.

Get your scarves, hats
and gloves ready for a
brrrrrrilliant and chilly
adventure!

Where do you think we
might be learning
about?





These people live there.
Why might they be
wearing clothes like
they are wearing?



The answer is...
the Arctic.
Did you guess
correctly? Do you know
where the Arctic is?





The Arctic


What do you already know?



Here is a world map. The red line shows where the Arctic starts. It is called the Arctic Circle because our world is a sphere shape.

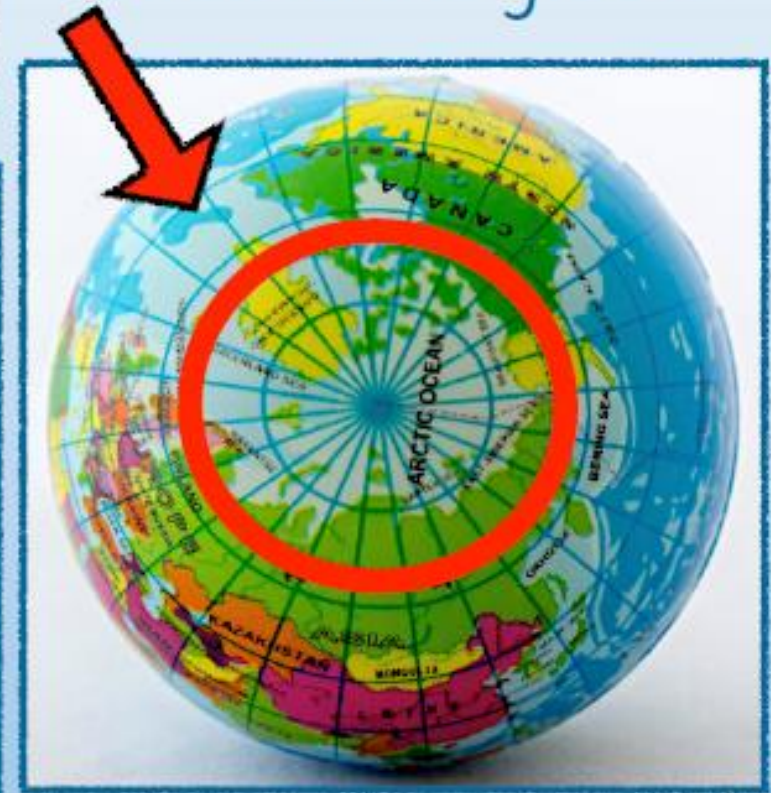
BACK

NEXT



Our world is a sphere. We call it a globe. The Arctic Circle is at the top of the globe.

This is the Arctic Circle on a globe.



If you have a globe, could you find where it is?



The dotted lines show the position of the Arctic Circle. There are seven countries in the Arctic Circle.



Alaska
(U.S.A)



Canada



Greenland



Norway



Sweden



Finland



Russia



Can you see these countries on the two maps? Look closely at their flags.

Alaska (U.S.A.)



Sweden



Greenland



Norway



Canada



Russia



Finland



These are the countries that make up the Arctic Circle.

Do you know anything about these countries?

Alaska (U.S.A.)



This is Barrow.
What can you see?
What does the
Alaskan flag look like?



BACK

NEXT

Greenland



This is
Qaanaaq (car-nak).
What can you see?
What does the
Greenlandic flag look like?



BACK

NEXT

Canada

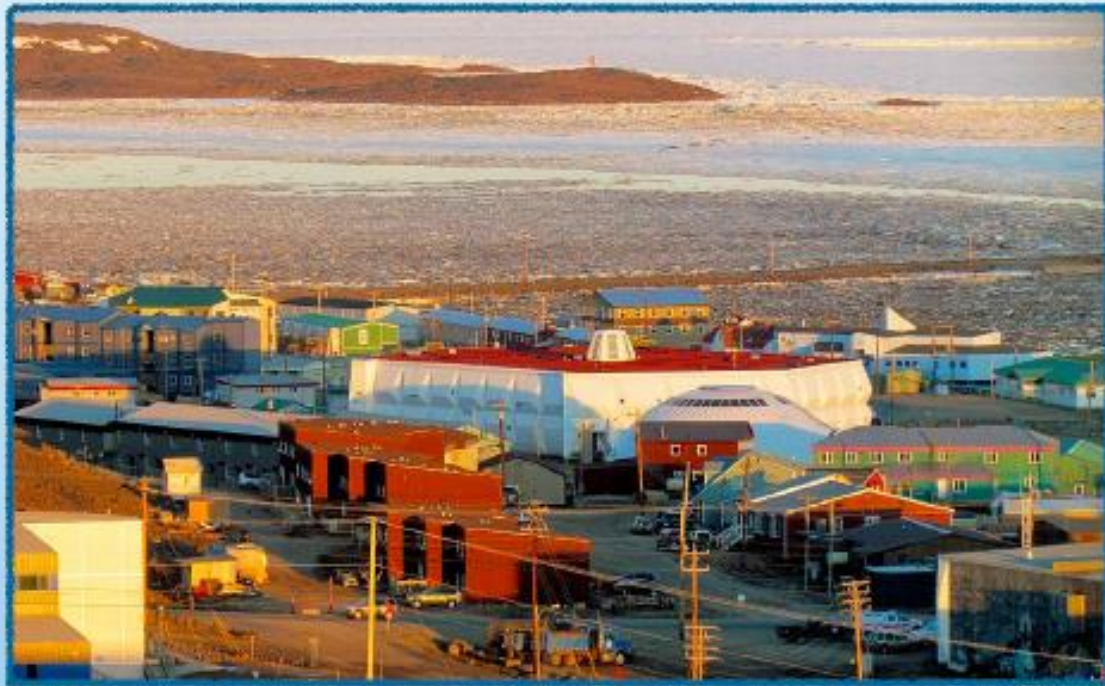


Photo Attribution: ACleB



This is
Iqaluit (i-ca-lu-it). What
can you see?
What does the
Canadian flag look like?



BACK

NEXT

Finland



This is Rovaniemi
(ro-ven-i-may). What
can you see?
What does the Finnish
flag look like?



BACK

NEXT

Sweden



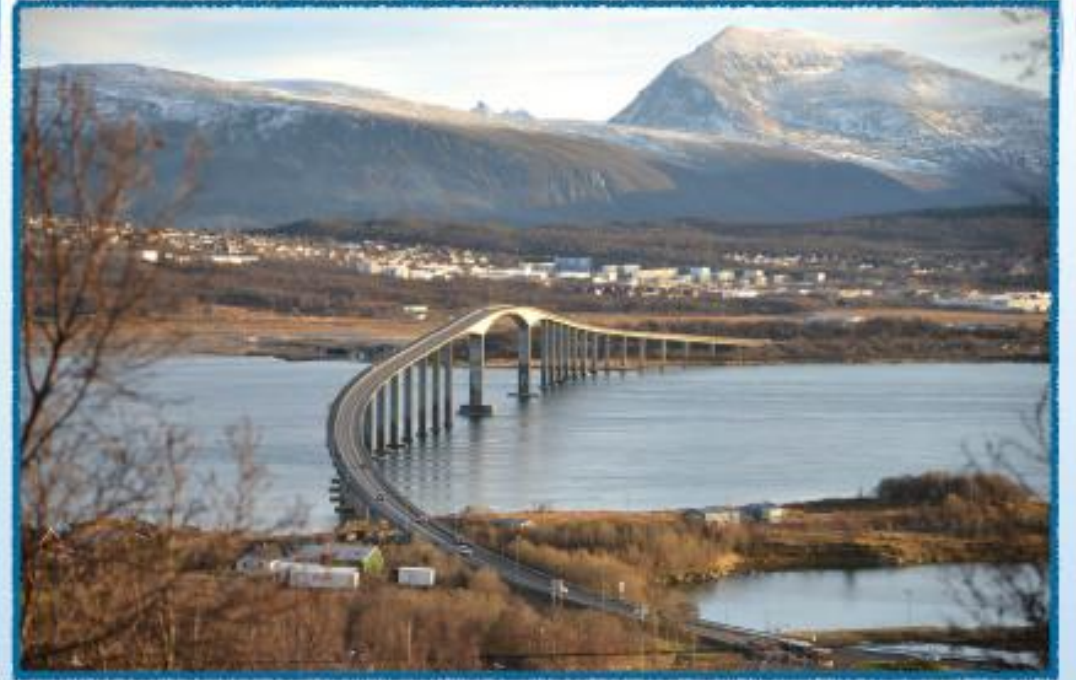
This is Kiruna.
What can you see?
What does the
Swedish flag look like?



BACK

NEXT

Norway



This is Tromsø. What can you see?
What does the Norwegian flag look like?



BACK

NEXT

Russia



This is Murmansk
(mer-men-sk). What can
you see?
What does the Russian
flag look like?



BACK

NEXT

Task 1 – This is set on Purple Mash for you, called Geography 24.2.2021 task 1 flags.

Which countries make up The Arctic?

Write the names of the countries and draw their flags.

--	--

--	--

--	--

--	--

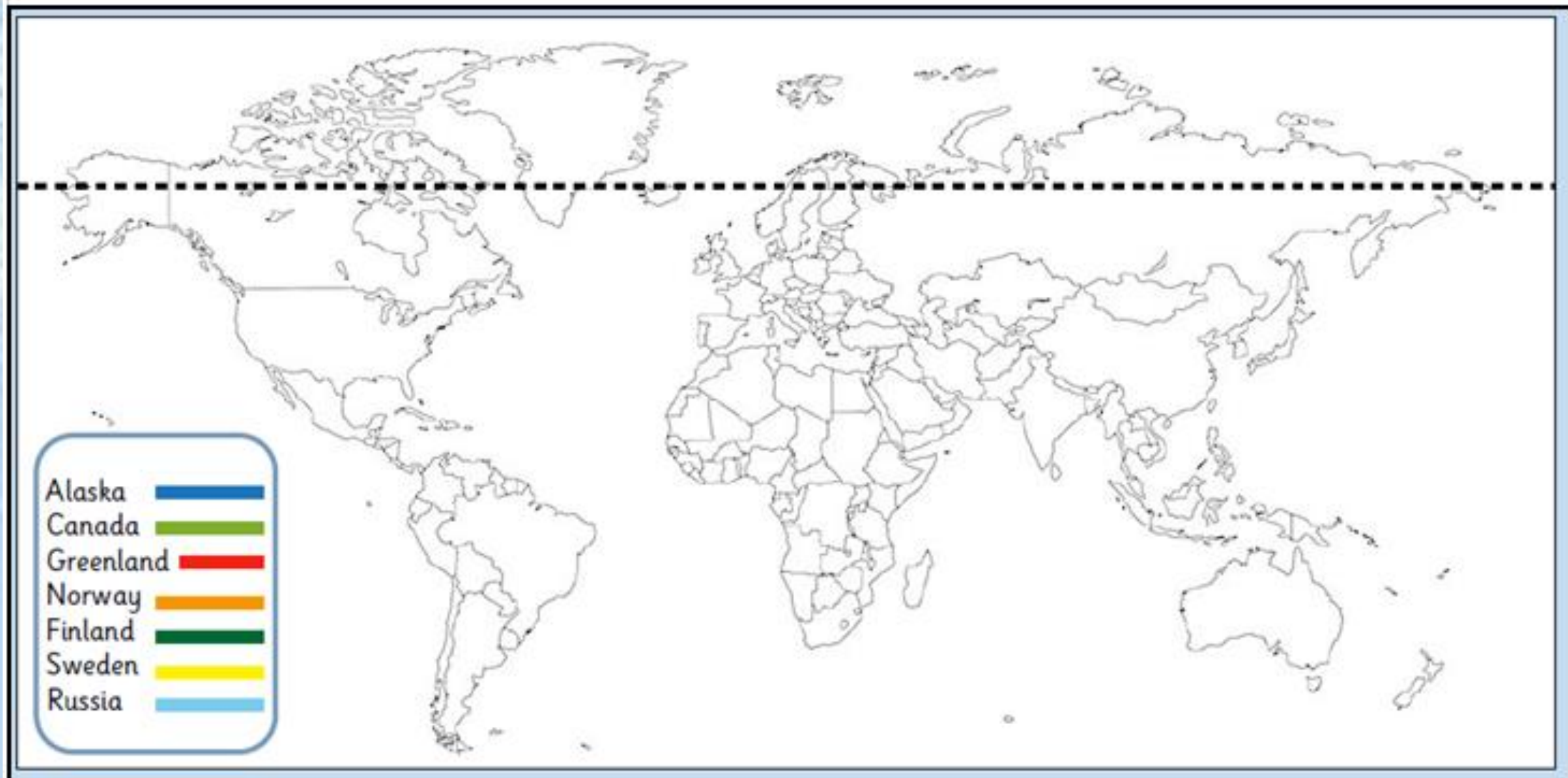
--	--

--	--

--	--

Can you draw your own country's flag?	
---------------------------------------	--

Task 2 – This is set on Purple Mash for you, called Geography 24.2.2021 task 2 map. Colour in the countries using the colours in the key. Use the Powerpoint, an atlas or a globe to help you if you need a reminder of where they are.



Plenary

Can you remember the names of the countries in the Arctic circle. What letters are missing here?



Al_s_a

C_n_da

_or_ay

F_n_a_d

S_e_en

_us_ia

G_e_nla_d

BACK

NEXT

www.planbee.com

This is set as a 2do for you on Purple Mash (it is called Geography 24.2.2021 plenary).